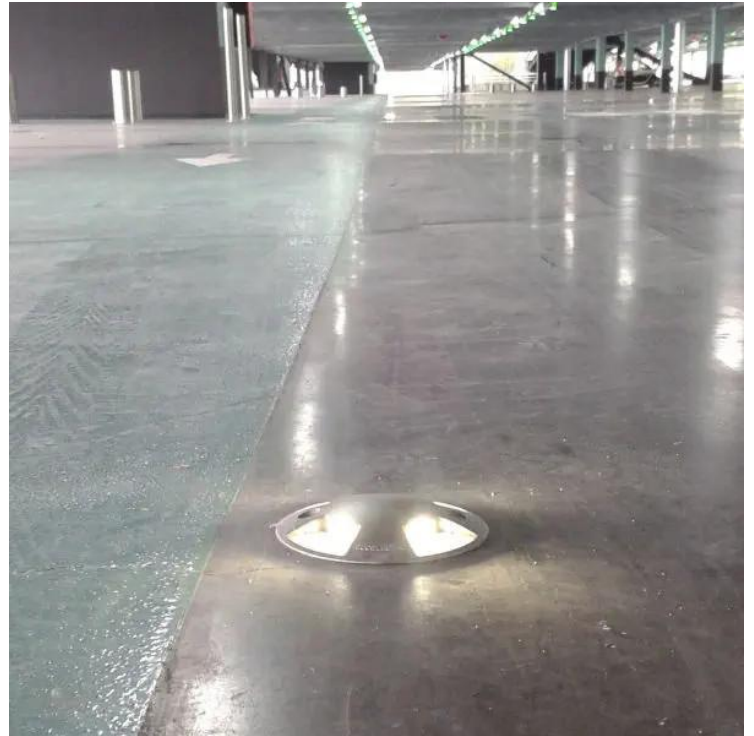


NOVA

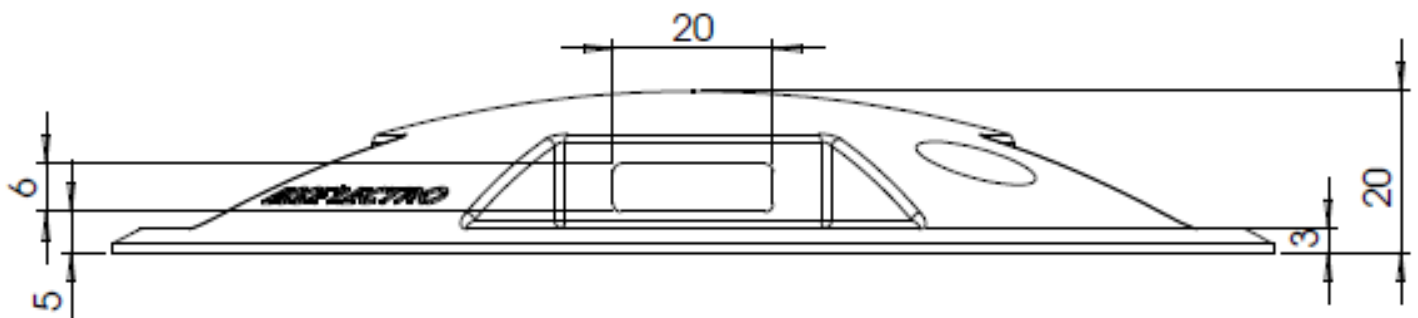
Parking LED Marker| Indoor | Outdoor



45lm quadri-directional safety LED marker made of 316L inox and impact resistant polycarbonate to withstand the passage of vehicles.

APPLICATIONS:

- Car park marking
- Footbridge beaoning
- Beaoning in an industrial environment



NOVA

Parking LED Marker| Indoor | Outdoor



Technical data	NOVA		
Dimensions	Height 20mm and ø144mm		
Numberof LEDs/ Flux	4x3 LED –45 lumens (LED White)		
Power	2.5W 11.6VA		
Body materials	Inox 316L and polycarbonate		
LED Color	White Blue Red Green Amber		
lifespan	50 000 hours L 70		
operating temperature	-20°C à +45°C		
Input power	voltage	24Vcc	Ref 100415
	voltage	48Vcc/ca	Ref 100206
	voltage	230Vca	Ref 100198
Electrical class	Class II or III depending on model		
Connection	Câble CR1C1 2*1mm ² L=0.5m		
IK	IK10 – 5t		
IP	IP68 – 2m 1h		
Fixation	2 stainless steel M8 screws and shallow steel flush-mounting box		
Compliance	NF-EN 605598-2-22 et art. ERP PS22		
Glow wire test	850°C		
Warranty	5 years		
Place of manufacture	France		

Photometric data +/- 10%, the manufacturer reserves the right to modify the characteristics without prior notice.