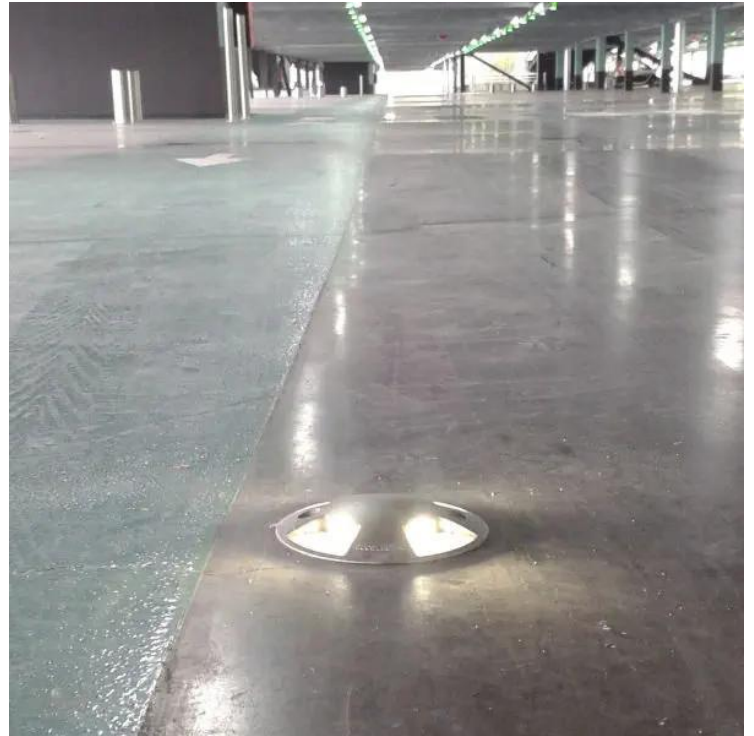


# NOVA

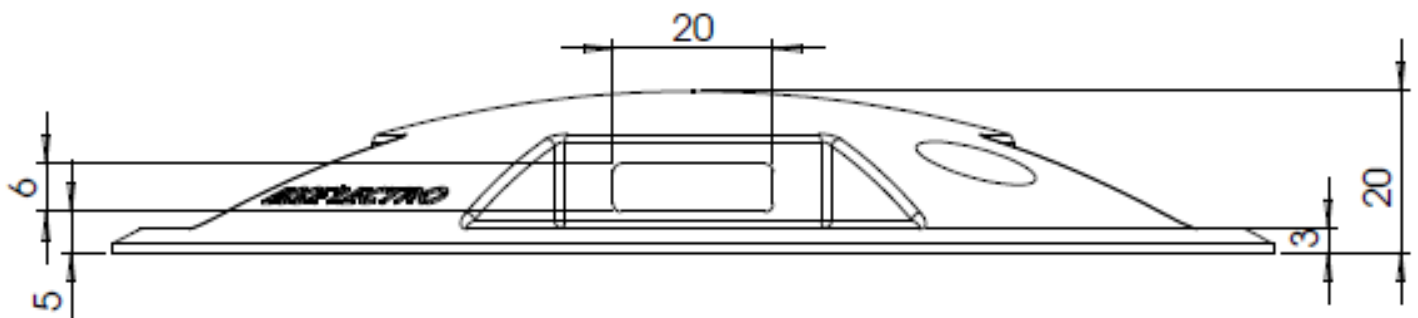
Parking LED Marker| Indoor | Outdoor



45lm quadri-directional safety LED marker made of 316L inox and impact resistant polycarbonate to withstand the passage of vehicles.

## APPLICATIONS:

- Car park marking
- Footbridge beaoning
- Beaoning in an industrial environment



# NOVA

**Parking LED Marker| Indoor | Outdoor**



Technical data	NOVA
Dimensions	Height 20mm and ø144mm
Number of LEDs / Flux	4x3 LED – 45 lumens (LED White)
Power	2.5W   11.6VA
Body materials	316L stainless steel and polycarbonate
LED Color	White   Blue   Red   Green   Amber
lifespan	50 000 hours L 70
operating temperature	-20°C to +45°C
Alimentation	24Vcc   48Vcc   230Vca
Electrical class	Class II or III depending on model
Connection	Cable CR1C1 2*1mm <sup>2</sup> L=0.5m
IK	IK10
IP	IP68
Fixation	2 stainless steel M8 screws and shallow steel flush-mounting box
Compliance	NF-EN 605598-2-22 and art. ERP PS22
Glow wire test	850°C
Warranty	5 years
Place of manufacture	France

Photometric data +/- 10%, the manufacturer reserves the right to modify the characteristics without prior notice.